

REMOTE I/O

System Solutions for Zone 1 and Zone 2

STAHL

ELECTROMACH

PROFI
NET

IS1+



NEW: PROFINET for Remote I/O in Ex areas

PROFIBUS International has developed the requirements on PROFINET for Remote I/O and specified it with profile „PROFINET RIO for PA“. A member of the respective PI working group „DCS Requirements“, R. STAHL is one of the first suppliers who can present a Remote I/O for PROFINET in process automation:

- System integration via PROFINET GSDML
Comfortable and to a great extent automated integration in engineering systems
- Scaling of process values with units possible
- Mode handling for targeted control of signal transmission:
„AUTO“ (cyclic updating), „MANUAL“ or „O/S“ (Out of Service)
- NAMUR NE107-conformal status information for a quick and simple overview of signal quality
- PI status format (condensed status) supports precautionary maintenance messages of the new IS1+ self-diagnostics
- Detailed alarm and diagnostics data for service and maintenance personnel
- WebServer for additional diagnostics for commissioning or maintenance
- Support of the new IS1+ mixing modules AI/AO and DI/DO, signals may be parameterized per channel as input or output

Note

PROFINET slave redundancy and online changes of configuration or parameters are not yet supported by the current PROFINET IO controllers

ELECTROMACH B.V.

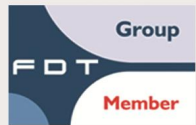
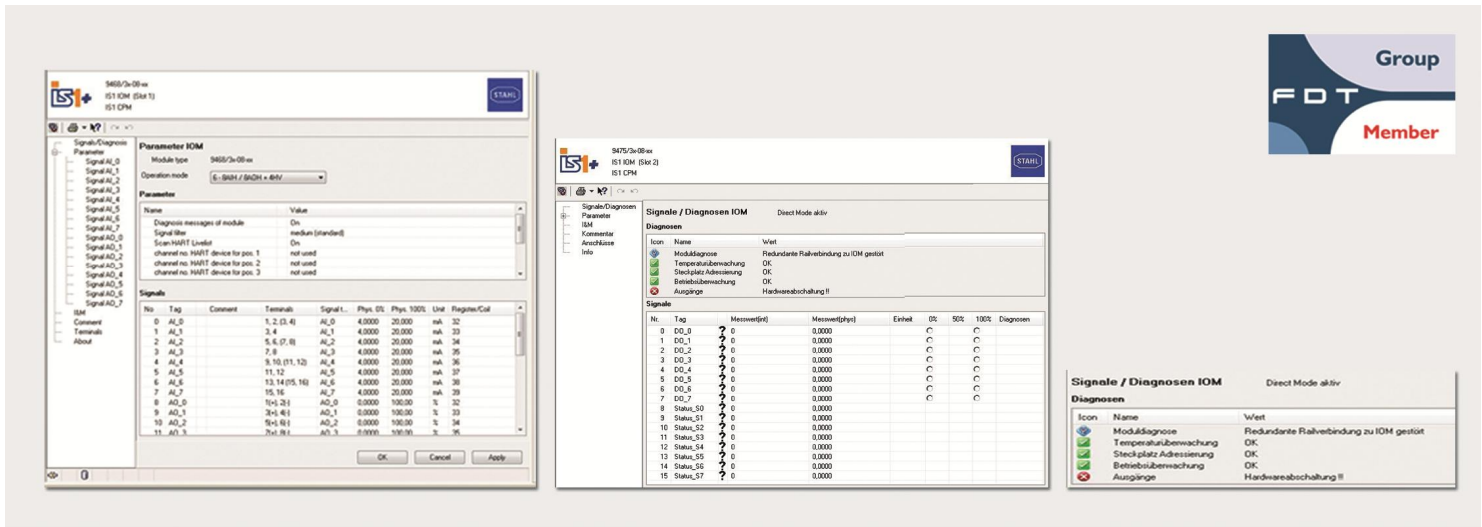
Jan Tinbergenstraat 193
7559 SP Hengelo
The Netherlands

T +31 (0)74 2 472 472
F +31 (0)74 2 435 925
info@electromach.nl
www.electromach.com

Bank: ABN-AMRO 24.35.24.439
IBAN: NL73ABNA0243524439
BIC: ABNANL2A
KVK nr: 06040491

Bank: ABN-AMRO 59.01.14.573
IBAN: NL29ABNA0590114573
BIC: ABNANL2A
VAT/BTW: NL 003578458B01

Leveringen geschieden
overeenkomstig onze voorwaarden.
*Deliveries subject to our general
conditions of sale.*



New version of device DTM for IS1+ systems

- Support of IS1+ mixing modules. Configuration of channels optionally as input or output
- Extended diagnostics with IS1+ modules. Monitoring for excess temperature and information about maintenance requirement of station and modules. NE107-conformal
- Improved HART performance. Speed-up of parameterization and condition monitoring of HART devices
- Extended HART telegram length. Transmission of extensive HART telegrams of up to 234 bytes via PROFIBUS DP – compatible with HART 7
- Unicode support, e.g. for Asian character sets, completely compatible with Windows 7

Further features

- Support of IS1+ communication protocols: PROFIBUS DP, Modbus RTU, Modbus TCP and EtherNet/IP
- Complete access to all HART, module and station parameters and diagnostics data
- Extensive „information & maintenance“ functions to read and record serial numbers, versions, device data, etc
- Comfortable automatic functions like „HART Live List“ – display (even without control system) or automatic network Setup of topology (if supported by the frame)

More details on www.electromach.com. Please enter the WebCode.

WebCode 9499A

WebCode RIO1

WebCode RIO2

WebCode AUT1